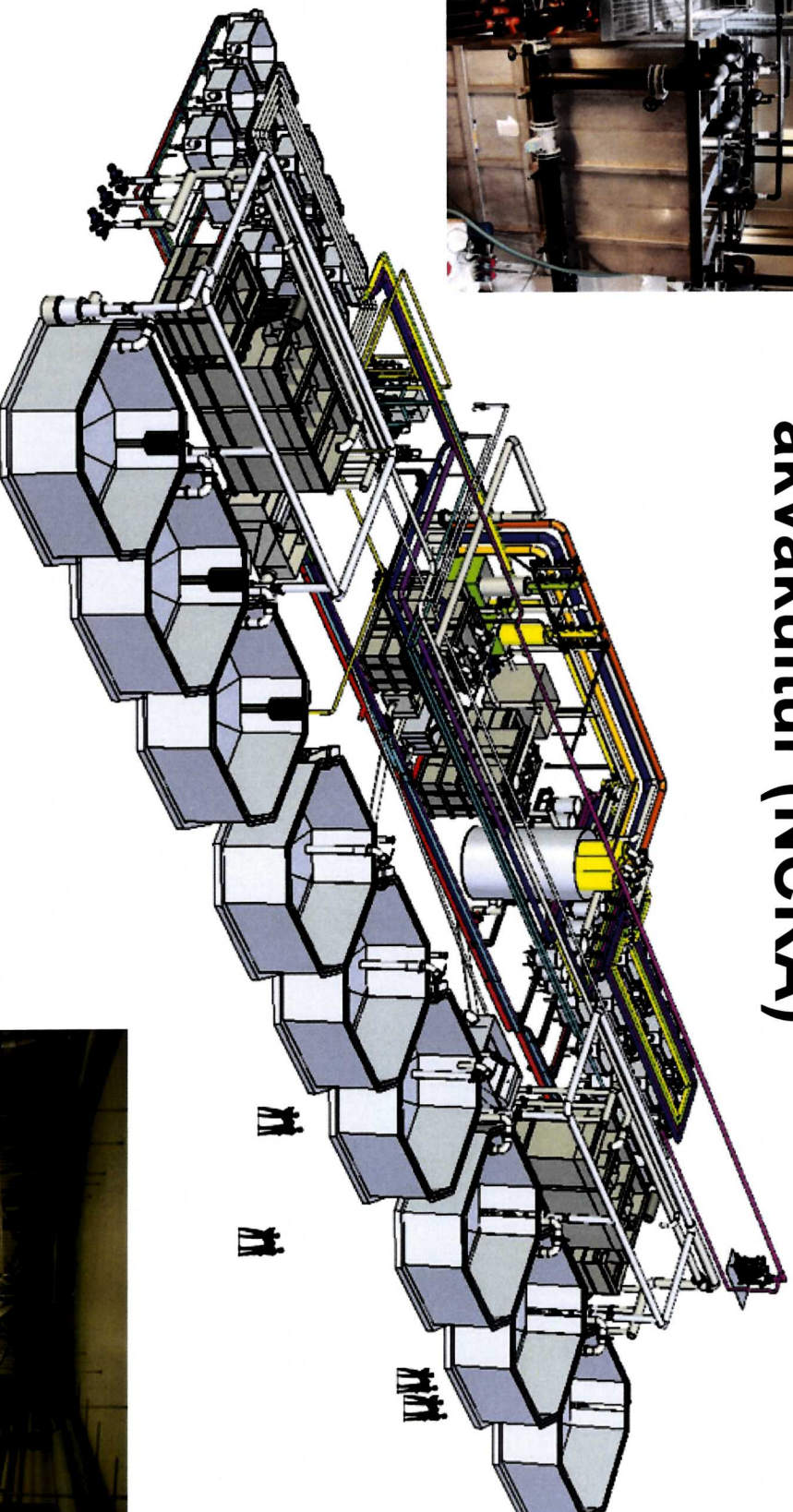
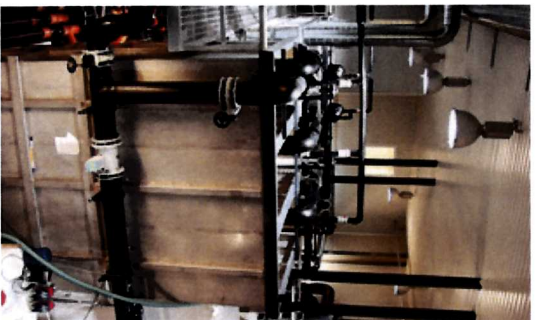


# Nofima senter for resirkulering i akvakultur (NCRA)



(1750 m<sup>2</sup> grunnflate, 550 m<sup>2</sup> 2. etasje, 6 forsøks-haller,  
4 separate RAS med totalt 697 kg fôr/dag teoretisk kapasitet,  
9 x 100 m<sup>3</sup> kar, 30 x 3.2 m<sup>3</sup> kar, og 18 x 0.5 m<sup>3</sup> kar)



AquaExcel  
Transnational  
Access Point  
[www.aquaxcel.eu](http://www.aquaxcel.eu)



 Nofima